

HOW TO MAKE A TIERED PETER PAN COLLAR



illustrated by Heather Smith Jones

MATERIALS



INSTRUCTIONS

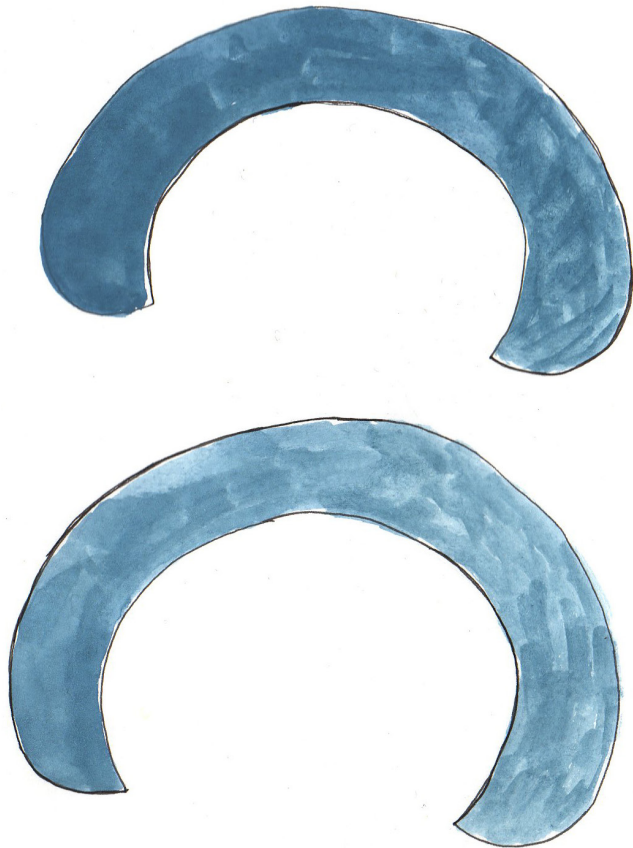


Pattern pdf

$\frac{1}{4}$ yd. of mid-weight cotton, linen, or silk

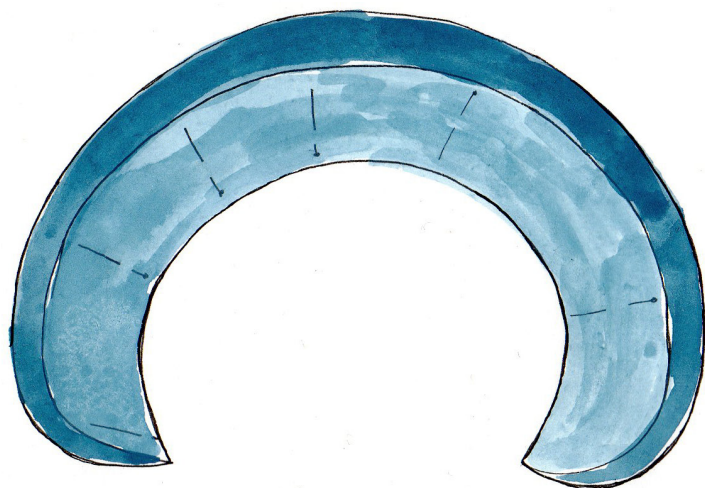
38 in. piece of $\frac{3}{8}$ in. (9mm) single fold bias tape.

Note: Bias tape can be made shorter or longer depending on the length you prefer your ties.



1

cut fabric to pattern. Using a stitch length of 1-1.5, sew along outer edge of both collar pieces ($\frac{1}{4}$ in. seam allowance). Trim seam allowance to $\frac{1}{8}$ in. Turn both collar pieces inside out, press.



2

Place smaller collar on top of larger collar. Line up the neck edges and center back notch. Pin collars together and baste $\frac{1}{2}$ in. from neck edge.

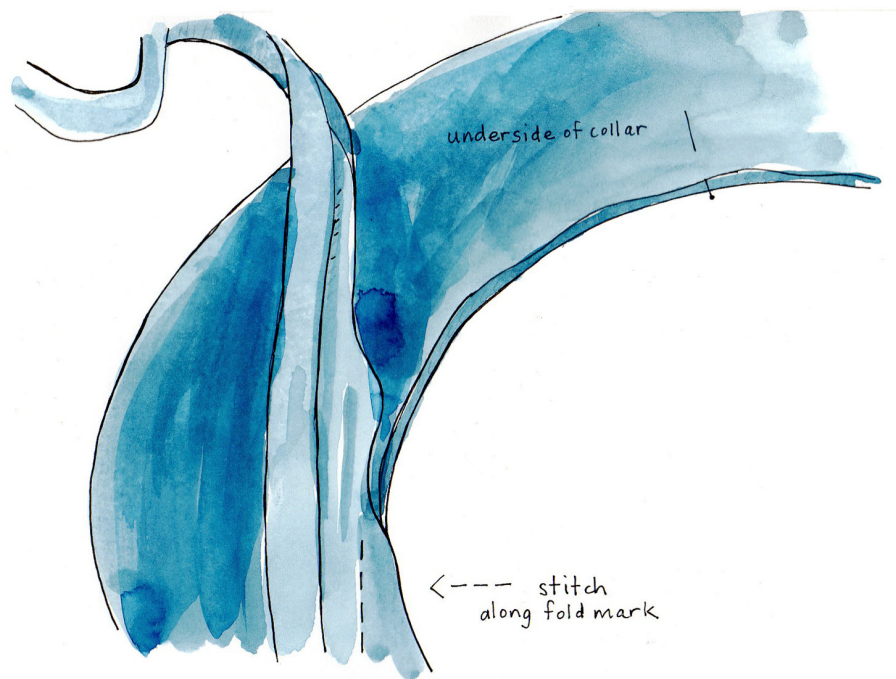


3



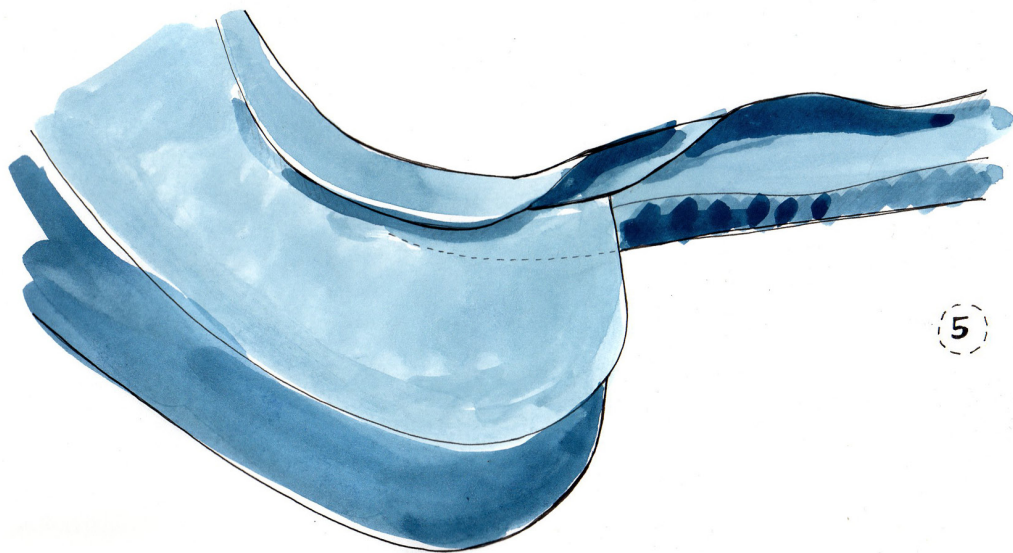
3a

Fold bias tape in half lengthwise and press. Fold the cut ends of the bias tape as shown.



4

Mark the halfway point of the bias tape. Open up the bias tape and pin along edge of neck (right side of the bias tape to the wrong side of the collar). Make sure to line up the halfway mark on the bias tape with the notch at the back of collar. Baste (starting and stopping before the tie straps) right along the first fold mark of the bias tape.



5

Fold bias tape over the raw edge to the front, it should come just to the basting line on the front of the collar, pin in place. Fold the tie straps in half lengthwise (the same fold you pressed for step 3) and pin. Stitch along edge of bias tape starting at the beginning of one tie strap and ending at the other. Make sure the stitching on the front of the bias tape catches the back too.



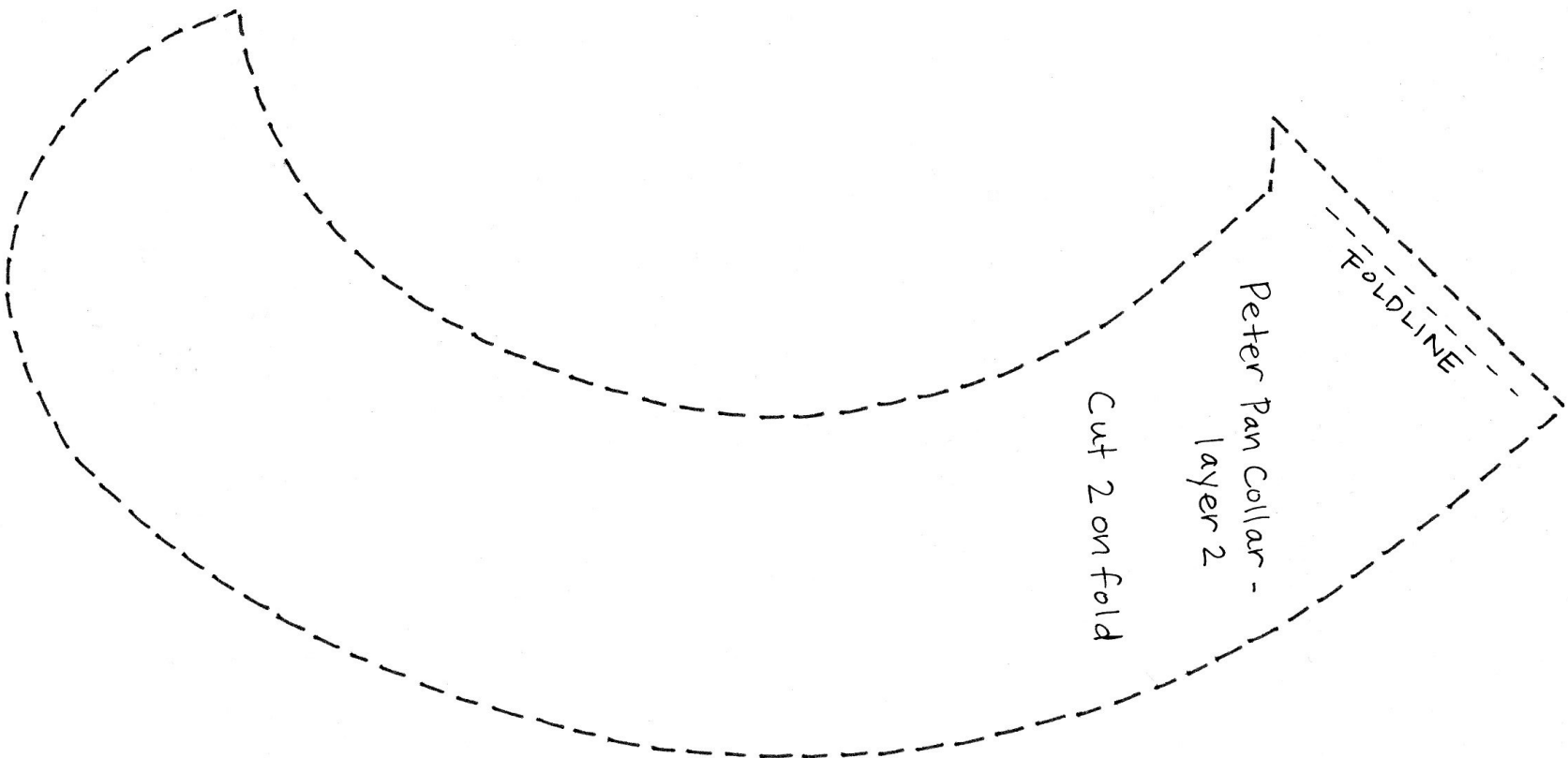
⑥ Remove basting.

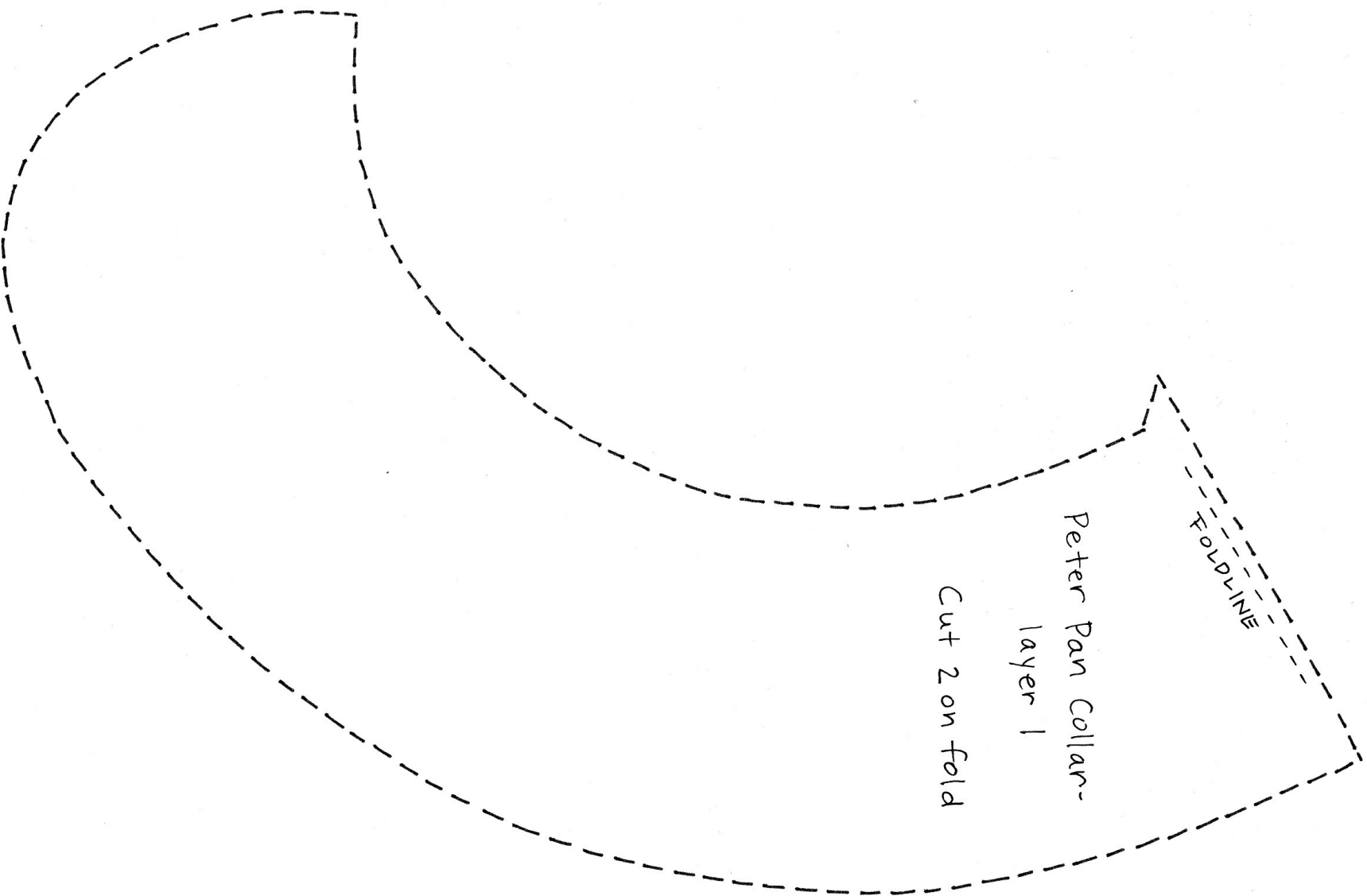


⑦

All done! Pair your collar with a pretty white dress in the summer or a blouse and sweater in the fall.

illustrations by: Heather Smith Jones





Created by *Heaven*
for {frolic!}